

# ***BaByliss***<sup>®</sup>

## **HYDRO-FUSION CURL SECRET™ C1700U**

**UK Patent and Application Nos. GB2455716; EP2242393;  
WO2012/080751; GB1210274.5**

### **IMPORTANT!**

**This styler reaches high temperatures and is not suitable for use on either synthetic or real hair extensions.**

**The hair should be clean, dry and free of dry shampoo, hairspray, mousse, spray wax, styling dust and all other styling products.**

### **SAFETY CAUTIONS**

- Original instructions. Read these safety precautions carefully before using the unit! This appliance should only be used as described within this instruction booklet. Please retain for future reference.

### **WARNING! BURN HAZARD: THIS APPLIANCE GETS HOT!**

- **ALWAYS** keep out of reach of children (during and after use and whilst cooling).
- Always take extra care if used on children or near children.
- Do not use on very young children.

## **IMPORTANT SAFETY**



- **UK Only:** This appliance must not be used in the bathroom.
- **Outside the UK:** If using the appliance in a bathroom, unplug after use as the proximity of water can be dangerous even if the appliance is switched off. For additional protection the installation of a residual current device (RCD) with a rated residual operating current not exceeding 30mA is advisable in the electrical circuit supplying the bathroom. Ask your installer for advice.
- **WARNING!** Do not use this appliance near bathtubs, showers, basins or other vessels containing water.
- Do not immerse the appliance into water or other liquids.
- Always inspect the appliance before use for noticeable signs of damage. Do not use if damaged, or if the appliance has been dropped. In the event of damage, discontinue use immediately. Contact the Conair Customer Care Line (refer to 'UK After Sales Service' section for further information).
- Do not use the appliance if the lead is damaged. In the event of damage, discontinue use immediately. If the lead is damaged it must be replaced by the manufacturer. Return the appliance to the Customer Care Centre (refer to 'UK After Sales Service' section for further information). No repair must be attempted by the consumer.
- Do not leave the appliance unattended when switched on or plugged in.
- During use, do not place the appliance on any heat sensitive surface, even when using the heat mat

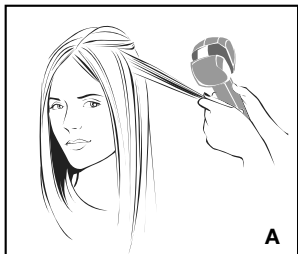
provided.

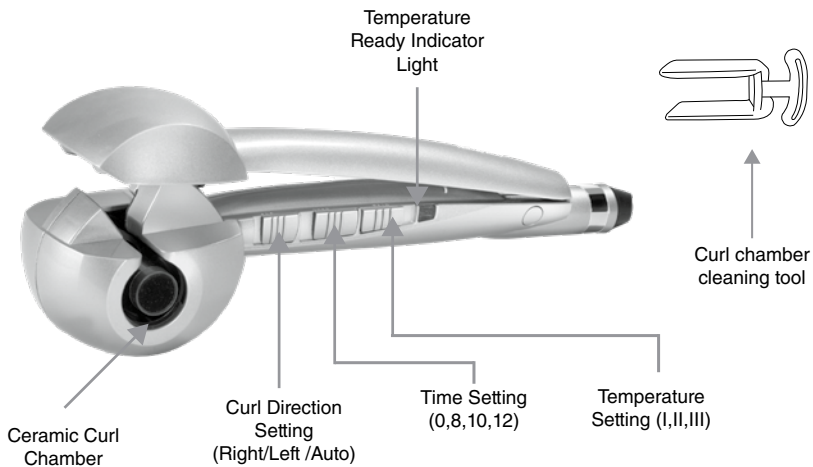
- **WARNING!** Only hold the handle during use. Do not touch the hot surfaces of the appliance when in use as these can be extremely hot.
- Take care to avoid the hot surface of the appliance coming into direct contact with the skin, in particular the eyes, ears, face and neck.
- In the event the appliance is left switched on, it will automatically shut off after 60 minutes. If you wish to continue using the appliance after this time, simply slide the switch to the '0' setting, then slide the switch to the relevant setting to turn the power on.
- This appliance can be used by children aged from 8 years and above and persons with reduced physical, sensory or mental capabilities or lack of experience and knowledge if they have been given supervision or instruction concerning use of the appliance in a safe way and understand, the hazards involved. Children shall not play with the appliance. Cleaning and maintenance shall not be made by children without supervision.
- Allow the appliance to cool before storing away.
- After use, do not coil the lead around the appliance as this may cause damage. Instead, coil loosely by the side of the appliance.
- Do not use any accessories other than those recommended by BaByliss.
- Always unplug the appliance when not in use or before cleaning.
- This product complies fully with all appropriate EU and UK Legislation and the Standards relevant to this type and class of appliance. We are an ISO9001:2015

certified company that continually evaluates our Quality Management System performance. If you have any queries regarding product safety and compliance, please contact the Conair Customer Care Line. (See 'UK After Sales Service' section for further information).

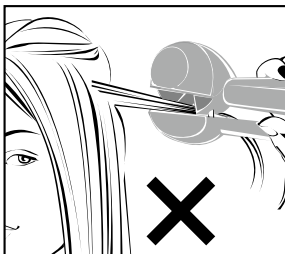
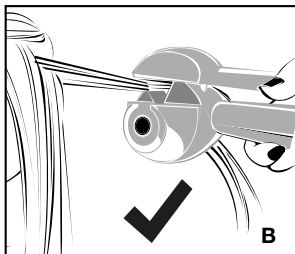
## **INSTRUCTIONS FOR USE**

- Ensure the hair is clean, dry and free of dry shampoo, hairspray, mousse, spray wax, styling dust and all other styling products.
- Comb through to remove any tangles and divide the hair into sections of 3cm to 5cm depending on your hair type.
- Plug the styler into a suitable mains socket.
- Slide the temperature switch to the required heat setting.
- The styler is ready for use when the on indicator light has stopped flashing.
- There are 3 timer settings, choose the required setting for the hair type. Alternatively, switch the audio off to '0'.
- Select the curl direction by sliding the control to either position 'L', 'R' or 'A'.
- Separate a section of hair that is no bigger than 3cm (Diagram A). When working with naturally curly or longer length hair, we advise you to use even smaller sections.
- Always insert the hair into the styler with the open part of the curl chamber facing towards the head. For longer length hair, insert the hair into the styler further down the section to ensure the hair is drawn into the curl chamber efficiently.

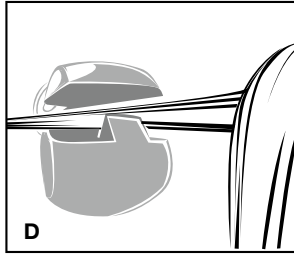




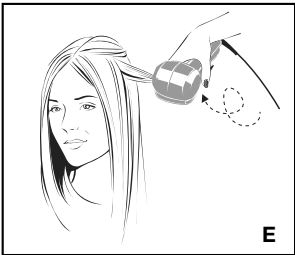
- Please note the styler must be positioned into the hair with the open part of the curl chamber facing towards the head. (Diagram B).



- Position the styler where you want the curl to start. The hair section must be held straight, and placed neatly through the centre of the styler. (Diagram C & D).



- Once the hair is in place, let go of the hair section and close the handle to allow the hair to be automatically taken into the curl chamber. (Diagram E).

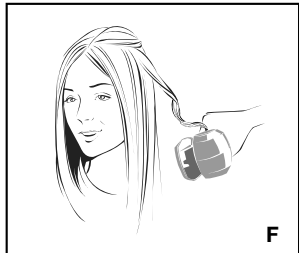


**NOTE:** If you continue to hold the hair section after closing the handle then the styler will stop and beep to indicate that you must release the tension on the hair. If you have taken too much hair, or hair is not neatly going through the centre of the appliance, the styler will again stop and beep to indicate a problem. This safety feature ensures that there will be no tangles.

- The hair is automatically drawn into the ceramic curl chamber where it is softly held and heated from all directions to effortlessly form the curl.
- If using the timer setting, the automatic beep indicator will start

as soon as the handles are closed together. There will be a series of individual beeps. Hold the styler still with the handles closed together until the end of the individual beeps. There will then be four quick beeps in succession. This indicates that the time is up and you can remove the styler from the hair. **NOTE:** When the audio off '0' setting is selected there will be no beep indicator. There will just be a warning beep at 15 seconds.

- It is very important that you release the handles fully, and then gently pull the styler away from the head to free the hair and reveal the curl (Diagram F). **NOTE:** Always release the handles first to let the curl free; if you pull away before you open the handles, the curl will be straightened out.



- To allow the curl to set, do not comb or brush the hair until it cools.
- Repeat around the head until you have the amount of curls desired.

## TEMPERATURE SETTINGS

There are 3 temperature settings to select from; 190°C, 210°C and 230°C. We recommend you always start with the lowest temperature setting and increase the level of heat as required.

- Setting I (190°C) - for delicate, fine or coloured hair
- Setting II (210°C) - for normal textured hair
- Setting III (230°C) - for thick or wavy hair

## **TIME SETTINGS**

There are 3 timer settings with audio beep indicator. These different settings will give different curl effects. The longer the time the hair is held inside the curl chamber, the more defined the curl will be. But results will also vary according to hair type. Use the following as a guide.

- Setting 8 (8 seconds = 3 beeps) - for loose waves
- Setting 10 (10 seconds = 4 beeps) - for soft curls
- Setting 12 (12 seconds = 5 beeps) - for more defined curls

**NOTE:** When in timer mode after the beeps finish, if the curler is kept shut, after a few moments the mains indicator will flicker and a single continuous beep will be emitted until the curl is released.

## **AUDIO OFF SETTING**

Slide the timer switch to '0'. When the '0' setting is selected there will be no beep indicator to advise when to release the styler. Take extra care when using this setting.

## **CURL DIRECTION SETTING (Right/Left/Auto)**

Use the Curl direction control to choose either a uniform or natural finish. Select the curl direction by sliding the switch to either left 'L' or right 'R'. When styling the left side of the hair, slide the curl direction switch to the left position - 'L'. When styling the right side of the hair, slide the switch to the right position - 'R'. This ensures that the curl sits towards the face on both sides of the head and will give a more uniform style. For a more natural look then select the auto setting 'A'. This will alternate the direction after each curl.

## **SLEEP MODE**

This appliance has an automatic sleep mode feature. If the styler is not used for more than 20 minutes the temperature will automatically drop down to around 150°C. If you wish to continue using the styler after



this time, simply close then release the handles and it will return to the temperature setting you were using it on.

### **AUTO SHUT OFF**

This appliance has an automatic shut off feature for added safety. If the appliance is switched on for more than 60 minutes continuously, it will automatically switch off. If you wish to continue using the appliance after this time, simply slide the switch to '0' position and then slide to the relevant setting to turn the power on.

### **Anti-Frizz Technology**

The advanced moisture-balancing dual ionic system combines both positive and negative ions, that work together to eliminate frizz as you style. Your hair is left feeling silky and conditioned with luxurious shine.

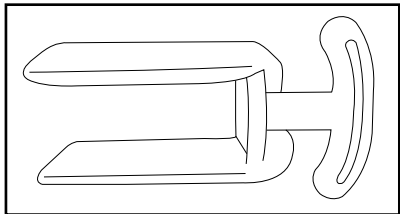
**Please note:** The blue LED light along the plate will illuminate to indicate the ionic feature is activated. The release of the ions from the port may produce a slight buzzing noise.

### **Heat Protection Mat**

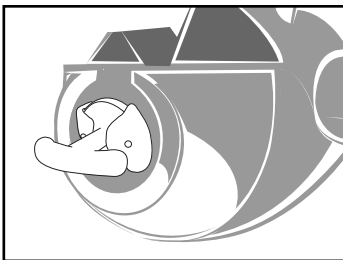
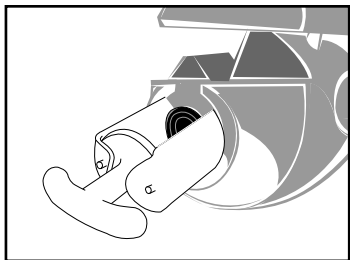
This appliance comes with a heat protection mat for use during and after styling. During use do not place this appliance on any heat sensitive surface, even when using the heat mat provided. After use, switch off and unplug the appliance. Immediately wrap the appliance in the heat mat provided and allow the appliance to fully cool down before storing away. Continue to keep out of the reach of children as it will remain hot for several minutes.

## CLEANING & MAINTENANCE

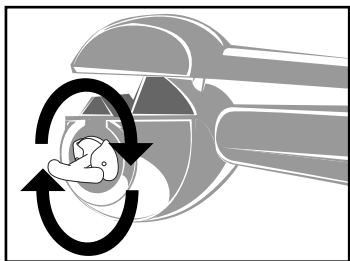
It is very important that you use the cleaning tool included with your appliance to regularly clean the curl chamber. This will prevent a build-up of product to ensure the curls produced are always perfectly formed.



- Ensure the appliance is switched off, unplugged and cool.
- Lightly dampen the cleaning tool with warm water and mild detergent or soap.
- Insert the tool fully into the curl chamber cavity as per the diagrams below.



- Rotate the tool around the curl chamber to remove any build-up of product.



- Ensure the appliance has dried thoroughly before re-using.
- The cleaning tool can be used numerous times; just remove the felt pads, rinse them in warm, soapy water and leave to dry before using again.

**IMPORTANT:** Do not immerse the appliance in water or other liquids. To help keep your styler in the best possible condition follow the steps below:

- Do not wrap the lead around the appliance; instead coil the lead loosely by the side of the appliance.
- Do not use the appliance at a stretch from the power point.
- Always unplug after use.

## **UK GUARANTEE**

This BaByliss appliance is guaranteed for consumer use for 3 years and is only valid within the United Kingdom.

This guarantee covers consumer use only **i.e.** defects occurring under normal use within the home from date of purchase or date of delivery, whichever is later.

If the product develops a fault due to defects in materials or manufacture **within 12 months** from the date of purchase, to avoid delays and unnecessary inconvenience, where possible please return the product to the point of purchase for an exchange.

If the product develops a fault due to defects in materials or manufacture **after 12 months** from the date of purchase, and within the guarantee period, Conair UK After Sales Service will repair or replace the product.

## **Exclusions**

This guarantee will no longer be valid meaning that The Conair Group Ltd will not be liable to repair or replace your product where:

- 1.) The appliance has been used on a voltage supply other than that which is marked on the product, or advised within this instruction

booklet

- 2.) The appliance has been purchased from an unauthorised stockist\*
- 3.) The appliance is used for professional / non domestic usage
- 4.) Repairs or alterations have been attempted by unauthorised persons
- 5.) The failure of the appliance is a direct result of misuse
- 6.) The failure is a result of not following the instructions for use

This guarantee does not cover any cosmetic damage due to misuse of the product nor any damage to persons or property that occurs because of product misuse.

\*unauthorised stockists include, but are not limited to online auction sites, private sellers and those selling second hand goods, refurbished products etc.

Please contact the Conair Customer Care Line on 03705 133 191 (09:00 to 17:00 Monday to Friday) or e-mail [ukinfo@conair.com](mailto:ukinfo@conair.com) for further information on authorised stockists.

**It is important to retain your proof of purchase. We recommend attaching your receipt to this page.**

**Even where a refund may be applicable, no refund will be provided without a valid receipt or proof of purchase, we will only be able to offer a repair or replacement service. Please note this does not apply if the product was purchased directly from The Conair Group Ltd.**

Guarantees on replacement products run from the original purchase date or date of delivery, whichever is later, and **not** from the date of replacement.

**This guarantee is an additional benefit and does not affect your statutory rights as a consumer.**

If you have any queries regarding this guarantee please contact the Conair Customer Care Line on 03705 133 191 (09:00 to 17:00 Monday to Friday) or e-mail [ukinfo@conair.com](mailto:ukinfo@conair.com)

### **UK AFTER SALES SERVICE**

For further advice on using the appliance or should you need to return your product, please contact the Conair Customer Care Line on 03705 133 191 (09:00 to 17:00 Monday to Friday) or e-mail your enquiry to [ukinfo@conair.com](mailto:ukinfo@conair.com)

Return address:


Customer Care Centre  
Conair Logistics  
Unit 4, Revolution Park  
Buckshaw Avenue  
Buckshaw Village  
Chorley  
PR7 7DW

Please enclose your returns number, name and address details, together with a copy of proof of purchase and details of the fault.

**Please note this Instruction Booklet is not the guarantee.**

## SAFE DISPOSAL



The  symbol on the product or on its packaging indicates that this product may not be treated as household waste. Instead it should be handed to an appropriate collection point for the recycling of Electrical and Electronic equipment. By ensuring this product is disposed of correctly, you will help prevent potential negative consequences for the environment and human health, which could otherwise be caused by inappropriate waste handling of this product. For more detailed information about the recycling of this product, please contact your local council office or your household waste disposal service.



