

BaByliss[®]

GRAPHITE PRECISION 12 IN 1 MULTI-TRIMMER MT987U


SAFETY CAUTIONS

- Original instructions. Read these safety precautions carefully before using the unit! This appliance should only be used as described within this instruction booklet. Please retain for future reference.

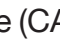
IMPORTANT CHILD SAFETY

- **ALWAYS** keep out of the reach of very young children (during and after use).
- This appliance should not be used, cleaned or maintained by children.
- Always take extra care if used on children or near children.
- Do not use on very young children.

IMPORTANT SAFETY

- This appliance can be used in the bath or shower.  **CAUTION!** for appliances with a removable power supply unit, remove the power cord before cleaning or using the appliance under running water.
- **UK Only:** Do not charge this appliance in the bathroom.
- **Outside the UK:** If using the appliance in a bathroom, unplug after use as the proximity of water can be

dangerous even if the appliance is switched off. For additional protection the installation of a residual current device (RCD) with a rated residual operating current not exceeding 30mA is advisable in the electrical circuit supplying the bathroom. Ask your installer for advice.

- The appliance's charging stand and/or adaptor must be kept away from sources of water so that they do not fall into the water.
- Always inspect the appliance before use for noticeable signs of damage. Do not use if damaged or if the appliance has been dropped. In the event of damage contact the Conair Customer Care Line (refer to 'UK After Sales Service' section for further information).
- Do not use the appliance if the charging adaptor or lead is damaged. In the event of damage, discontinue use immediately. If the charging adaptor or lead is damaged, it must be replaced by the manufacturer. Return the appliance to the Customer Care Centre (refer to 'UK After Sales Service' section for further information). No repair must be attempted by the consumer.
- Only use the attachments supplied with this appliance.
- **WARNING!** For the purposes of recharging the battery, only use the detachable charging supply unit provided with this appliance (CA69). This  symbol indicates there is a detachable power supply for means of charging.
- Do not leave the appliance unattended when switched on.
- Do not leave the appliance plugged in for more than 24 hours.

- Unplug immediately if any problems occur during use.
- Do not place the appliance on any surface whilst in operation.
- Special care is required when using the appliance close to the ears, eyes and face.
- Do not expose the appliance or battery to excessive temperatures.
- Recommended ambient temperature for charging is 5°C to 40°C. Charging outside of this temperature range may cause the battery to leak, generate heat, or result in serious damage. It may also cause the battery's performance and life to deteriorate.
- Be aware of the risk of terminals of the battery-operated appliance or battery being short circuited by metal objects.
- This appliance may be used by children aged from 8 and older and people with reduced physical, sensory or mental capabilities or lack of experience and knowledge if they have been given supervision or instruction on the safe use of the appliance and understand the hazards involved. Children must not play with the appliance.
- This product contains batteries (NiMH rechargeable 2.4V) that are not to be removed from the appliance for charging. The batteries in this appliance are non-replaceable. Batteries must be disposed of safely at the end of life. Please take to a recycling centre for safe disposal. If the battery leaks, avoid touching it and dispose of it at a recycling centre.
- The supply terminals are not to be short circuited.

- For domestic use only.
- This product complies fully with all appropriate EU and UK Legislation and the standards relevant to this type and class of appliance. We are an ISO9001:2015 certified company that continually evaluates our Quality Management System performance. If you have any queries regarding product safety and compliance, please contact the Conair Customer Care Line (refer to 'UK After Sales Service' section).

WEEE - END-OF-LIFE ELECTRICAL AND ELECTRONIC EQUIPMENTS

In everybody's interest and to actively participate in protecting the environment and human health:

- Do not discard your products with your unsorted household wastes.
- The WEEE (Waste electrical and electronic equipment) must be collected separately.
- Use the return and collection systems dedicated to the WEEE available in your area. In this way, some materials can be recycled, re-used or recovered.
- By ensuring this product is disposed of properly, you will help prevent potential negative consequences for the environment and human health due to possible content of hazardous substances.

For more detailed information about the disposal of this product, please contact your local household waste disposal service.

INSTRUCTIONS FOR USE

IMPORTANT! Only use the adaptor and attachments supplied with this appliance.

General

- Always inspect the appliance before use to ensure the trimmer blades are free from hair, debris etc.
- Use on clean, dry hair that has been combed until tangle-free.

Oiling Instructions

- For optimum cutting performance, it is highly recommended to oil the blades after every use.
- When using the oil for the first time, unscrew the cap and cut off the very end of the plastic tube with a pair of scissors.
- Remove the blade guard and switch the appliance on.
- Holding the trimmer at a 45 degree angle, gently squeeze the oil tube and apply 2 drops directly onto the blades.
- Leave the unit on for a further few seconds to allow the oil to thoroughly spread along the length of the blades.
- Switch off the unit and remove any excess oil by gently dabbing with a cloth before using on hair.

Charging the appliance

- This trimmer is equipped with Ni-MH batteries.
- Before using for the first time, the appliance should be fully charged continuously for 8 hours. This initial super-charge ensures optimum power performance to ensure smooth fast cutting every time.
- Maximum battery capacity will only be reached after 3 charging and discharging cycles.
- Ensure the appliance is switched off.
- Plug the charging adapter into a suitable mains power socket and switch on at the wall. The charging indicator light will illuminate when the appliance is charging. When the battery is fully charged the LED light will turn off.

Note: Always ensure the trimmer is in the I/O 'OFF' position when charging.

- A full 8 hours charge will supply enough power for 70 minutes of use.
- Subsequent charges should be for 8 hours.

Preserving the batteries

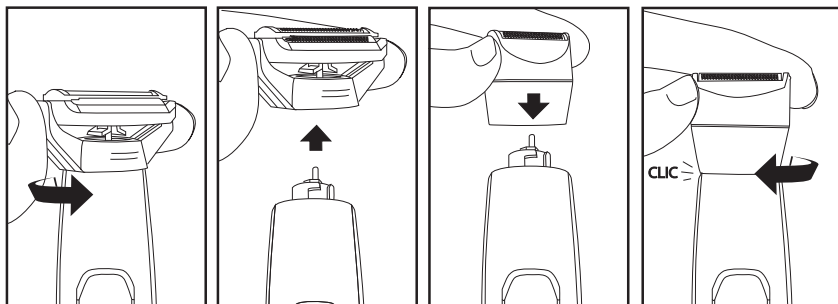
In order to maintain the optimum capacity of the rechargeable batteries, the trimmer should be fully discharged and then recharged for 8 hours every 3 months.

Cordless Operation

- Insert the adaptor into the base of the appliance, plug into a suitable mains socket and switch on. The indicator LED will appear when the adaptor is correctly inserted into the appliance and connected to the mains.
- Once the appliance is fully charged the indicator light will turn off. Unplug the adaptor from the mains socket and the appliance and prepare for use.
- A full charge provides 70 minutes of cordless use.

Changing the Heads

- Before changing the heads, ensure the trimmer is switched off.
- To remove the head, twist and pull off (Fig. 1).
- To attach the head; align the markers, slide the head on and twist to lock (Fig. 2).



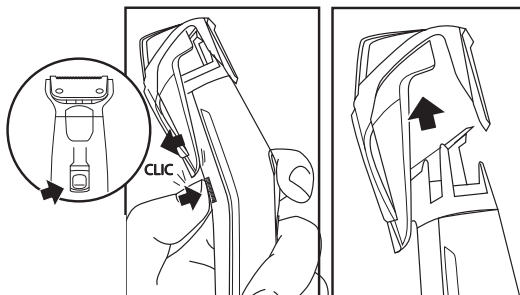
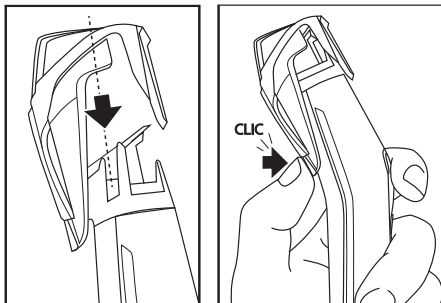
(Fig. 1)

(Fig. 2)

Comb Guides

7-position comb guide for Precision Trimmer

- Ensure the appliance is switched off.
- Attach the Precision Trimmer head.
- Align the trimmer with the tracks at the back of the handle. Slide the trimmer head onto the tracks. Push down the release mechanism to push it right on to the handle.
- The comb guide will be set to the shortest length when the comb guide is fully pressed down.
- With your thumb, push the guide up to the required length (2-14mm). The comb guide has 7 positions; 2mm, 4mm, 6mm, 8mm, 10mm, 12mm and 14mm.
- To remove the comb, place your thumb on the back of the attachment and pull out the comb base lock from the bottom, before pushing up.



6-position stubble comb guide for Precision Trimmer

The stubble comb with 6-position switch enables super fine cut adjustment for precision trimming.

- Attach stubble comb by sliding the head onto the tracks at the rear of the handle.
- Choose a length between 1-3.5mm in 0.5mm increments. Slide the switch across, so the line is lined up with the desired length.



Body Groomer comb guides for the Body Groomer

- Ensure the appliance is switched off
- Attach the body groomer head by taking off the current head and snapping the body groomer head into the base of the appliance.
- Attach a comb guide (3, 5, 7mm) by placing on top of the body groomer head and pressing down.
- To remove the body groomer comb guide push the comb guide up

TRIMMING

Precision Trimmer

Using the Precision Trimmer with 7-position stubble and 6-position beard comb guides

- Attach the 7-position beard comb guide (2-14mm) or the 6-position stubble comb guide (1-3.5mm) and select the required length.
- If you require more than one cutting length, start with the longest length first.
- Switch the trimmer on.
- Hold the trimmer with the teeth of the trimmer pointing upwards, yet flat against the skin.
- Move the trimmer upwards and outward through the hair, against the direction of hair growth.
- The trimmer will work most efficiently when cutting through hair at its own speed.
- Never switch the appliance off whilst in the hair.
- **Note:** The Precision Trimmer can be used without any comb guides

and will cut roughly to a length of 0.5mm.

To outline using the Precision Trimmer

- Do not attach a comb guide.
- Hold the trimmer upside down with the blade facing downwards, yet flat against the skin.
- Move the trimmer gently downwards in small strokes around the edge of the area you wish to outline.
- Having defined the outline, hold the trimmer with the blades pointing upwards, yet flat against the skin and move the trimmer upwards against the direction of hair growth. This will trim the unwanted hair adjacent to the outline.



Using the Body Groomer with comb guide

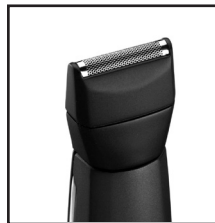
- Attach the body grooming attachment.
- Add on the comb guide if a longer length is required
- Switch the trimmer on.
- Hold the trimmer flat against the skin.
- Move the trimmer upwards and outward through the hair, against the direction of hair growth.
- Make sure to be particularly careful when trimming sensitive areas.
- The trimmer will work most efficiently when cutting through hair at its own speed.
- Never switch the appliance off whilst in the hair.
- **Note:** The Body Groomer can be used without any comb guides and will cut roughly to a length of 0.1mm.



Foil Shaver

Using the Foil Shaver

- For an ultra-smooth finish, use the foil shaver attachment.



- Always ensure the foil is not damaged before each use.
- Switch the trimmer on.
- Move the shaver gently over the skin, applying minimal pressure and shaving in the direction of hair growth.
- Make sure to be particularly careful when trimming sensitive areas.
- Never switch the appliance off whilst in the hair.

Nose & Ear Trimmer

Using the Nose & Ear Trimmer

- For the safe and easy removal of unwanted nose and ear hair use the rotary trimmer head.
- Switch the trimmer on.
- Insert the trimmer into the nose or ear and gently move the trimmer in a circular motion.
- Only use the trimmer at the entrance to the ear or nose. Do not use any deeper, as this could cause injury.
- Never turn the trimmer off whilst in the nose and ear hair.



Detail Trimmer

Using the Detail Trimmer

- For accurate tramlines and detailed effects, attach the Detail Trimmer head.
- Switch the trimmer on.
- Gently move the blade through the area of hair you wish to trim.
- The trimmer will work most efficiently when cutting through hair at its own speed.
- Never turn the trimmer off whilst in the hair.



CLEANING & MAINTENANCE

To maintain optimum performance, the appliance should be cleaned after each use:

- Remove the comb guide after use. Rinse under running water and dry thoroughly before storage or use.

- Remove the trimmer head after use. The heads are washable for easy cleaning. Rinse under running water and dry thoroughly before storage or use.
- Do not disassemble the blades.
- For instructions on how to re-attach the head, please refer to 'Changing the heads' section.



BATTERY DISPOSAL ████████

This appliance contains Ni-MH batteries. To protect the environment this appliance and its batteries must be disposed of safely. At the end of its life, please take this appliance to a recycling centre, where the internal rechargeable battery should be removed by a professional and recycled separately. For more information about the recycling of electrical and battery operated appliances please contact your local council office or your household waste disposal service. For specific enquiries regarding the replacement of batteries in this product please contact our Conair Customer Care Line (refer to 'UK After Sales Service' section).

UK GUARANTEE

This BaByliss appliance is guaranteed for consumer use for 3 years and is only valid within the United Kingdom.

This guarantee covers consumer use only **i.e.** defects occurring under normal use within the home from date of purchase or date of delivery, whichever is later.

If the product develops a fault due to defects in materials or manufacture **within 12 months** from the date of purchase, to avoid delays and unnecessary inconvenience, where possible please return the product to the point of purchase for an exchange.

If the product develops a fault due to defects in materials or manufacture **after 12 months** from the date of purchase, and within the guarantee

period, Conair UK After Sales Service will repair or replace the product.

Exclusions

This guarantee will no longer be valid meaning that The Conair Group Ltd will not be liable to repair or replace your product where:

- 1.) The appliance has been used on a voltage supply other than that which is marked on the product, or advised within this instruction booklet
- 2.) The appliance has been purchased from an unauthorised stockist*
- 3.) The appliance is used for professional / non domestic usage
- 4.) Repairs or alterations have been attempted by unauthorised persons
- 5.) The failure of the appliance is a direct result of misuse
- 6.) The failure is a result of not following the instructions for use

This guarantee does not cover any cosmetic damage due to misuse of the product nor any damage to persons or property that occurs because of product misuse.

*unauthorised stockists include, but are not limited to online auction sites, private sellers and those selling second hand goods, refurbished products etc.

Please contact the Conair Customer Care Line on 03705 133 191 (09:00 to 17:00 Monday to Friday) or e-mail ukinfo@conair.com for further information on authorised stockists.

It is important to retain your proof of purchase. We recommend attaching your receipt to this page.

Even where a refund may be applicable, no refund will be provided without a valid receipt or proof of purchase, we will only be able to offer a repair or replacement service. Please note this does not apply if the product was purchased directly from The Conair Group Ltd.

Guarantees on replacement products run from the original purchase date or date of delivery, whichever is later, and **not** from the date of replacement.

This guarantee is an additional benefit and does not affect your statutory rights as a consumer.

If you have any queries regarding this guarantee please contact the Conair Customer Care Line on 03705 133 191 (09:00 to 17:00 Monday to Friday) or e-mail ukinfo@conair.com

UK AFTER SALES SERVICE

For further advice on using the appliance or should you need to return your product, please contact the Conair Customer Care Line on 03705 133191 (09:00 to 17:00 Monday to Friday) or email your enquiry to ukinfo@conair.com.

The return address is:

Customer Care Centre,
Conair Logistics
Unit 4
Revolution Park
Buckshaw Avenue
Buckshaw Village
Chorley
PR7 7DW

Please enclose your returns number, name and address details, together with a copy of proof of purchase and details of the fault.

