

BaByliss[®]

LITHIUM POWER BEARD TRIMMER T812U

SAFETY CAUTIONS

- Original instructions. Read these safety precautions carefully before using the unit! This appliance should only be used as described within this instruction booklet. Please retain for future reference.

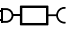
IMPORTANT CHILD SAFETY

- This appliance is not intended for use by persons (including children) with reduced physical, sensory or mental capabilities, or lack of experience and knowledge, unless they have been given supervision or instruction concerning use of the appliance by a person responsible for their safety. Children should be supervised to ensure that they do not play with the appliance.
- **WARNING:** Do not use this device in a bathtub, shower, or water-filled reservoir.
- **WARNING:** Keep the power cord and the appliance dry and away from sources of water so that they do not fall into the water. For appliances with a removable power supply unit, remove the power cord before cleaning.
- **UK Only:** Do not use this appliance in the bathroom.
- **Outside the UK:** If using the appliance in a bathroom, unplug after use as the proximity of water can



be dangerous even if the appliance is switched off. For additional protection the installation of a residual current device (RCD) with a rated residual operating current not exceeding 30mA is advisable in the electrical circuit supplying the bathroom. Ask your installer for advice.

- Always inspect the appliance before use for noticeable signs of damage. Do not use if damaged or if the appliance has been dropped. In the event of damage contact the Customer Care Line.
- Do not use the appliance if the charging adaptor or lead is damaged. In the event of damage, discontinue use immediately. If the charging adaptor or lead is damaged, it must be replaced by the manufacturer. Return the appliance to the Customer Care Centre. No repair must be attempted by the consumer.
- Only use the accessories supplied with this appliance.
- **WARNING!** To charge the product, only use a certified suitable power supply unit (BaByliss CA92 - part code 62628) with an output rating of 5V, 1A, 5W. Using a non-certified or incorrect power supply unit may cause hazards or serious injuries.
- The power supply unit is available via www.babyliss.co.uk.
- If you need support in finding the correct USB power supply unit, contact the Conair Customer Care Line (refer to 'UK After Sales Service' section for further information).
- Keep the USB cable, USB supply unit and accessories dry.
- **WARNING!** Using a non-certified supply unit may cause hazards or serious injuries.
- For safety reasons, the appliance can therefore only be used without a cord.

- This symbol  indicates there is a detachable power supply for means of charging (CA92).
- Do not leave the appliance unattended when switched on.
- Do not expose the appliance or battery to excessive temperatures.
- Recommended ambient temperature for charging is 5°C to 40°C. Charging outside of this temperature range may cause the battery to leak, generate heat, or result in serious damage. It may also cause the battery's performance and life to deteriorate.
- Be aware of the risk of terminals of the battery-operated appliance or battery being short circuited by metal objects.
- Do not leave the appliance plugged in for more than 24 hours.
- Unplug immediately if any problems occur during use.
- Do not place the appliance on any surface whilst in operation.
- Special care is required when using the appliance close to the ears, eyes and face.
- This product contains a Lithium Ion rechargeable battery that is not to be removed from the appliance for charging. The batteries in this appliance are non-replaceable. Batteries must be disposed of safely at the end of life. Please take to a recycling centre for safe disposal. If the battery leaks, avoid touching it and dispose of it at a recycling centre.
- The supply terminals are not to be short circuited.
- For domestic use only.
- This product complies fully with all appropriate legislation and the standards relevant to this type and class of

appliance. We are an ISO9001:2015 certified company that continually evaluates our Quality Management System performance. If you have any queries regarding product safety and compliance, please contact the Customer Care Line.

WEEE - END-OF-LIFE ELECTRICAL AND ELECTRONIC EQUIPMENT

In everybody's interest and to actively participate in protecting the environment and human health:

- Do not discard your products with your unsorted household waste.
- The WEEE (Waste electrical and electronic equipment) must be collected separately.
- Use the return and collection systems dedicated to the WEEE available in your area. In this way, some materials can be recycled, re-used or recovered.
- By ensuring this product is disposed of properly, you will help prevent potential negative consequences for the environment and human health due to possible content of hazardous substances.

For more detailed information about the disposal of this product, please contact your local household waste disposal service.

Recycling rechargeable batteries

- Some BaByliss appliances may have rechargeable batteries. Only for the purpose of recycling, these batteries must be removed from the appliance before it is discarded.
- Disconnect the appliance from the mains before removing the batteries.
- Remove the batteries by carefully opening the appliance case using the appropriate tools, then dispose of the batteries at a collection point intended for this purpose.
- Please contact BaByliss for additional information on how to remove the batteries.

INSTRUCTIONS FOR USE

IMPORTANT! Only use the attachments supplied with this appliance.

General

- Always inspect the appliance before use to ensure the trimmer blades are free from hair, debris etc.
- Use on clean, dry hair that has been combed until tangle-free.

Charging the appliance

- This trimmer is equipped with Lithium-ion batteries.
- Before using for the first time, the appliance should be fully charged continuously for 3 hours. This initial super-charge ensures optimum power performance to ensure smooth fast trimming every time. Maximum battery capacity will only be reached after 3 charging and discharging cycles.
- Plug the charging cable into a suitable mains power socket and switch on at the wall. A blue LED light will flash to indicate the trimmer is charging. When the battery is fully charged the LED will stop flashing and remain alight.

- Subsequent charges should be 3 hours.
- A full charge will provide 80 minutes use.

Note: The trimmer will not switch on whilst charging.

Note: This product comes with a USB charging cable. If you require an adaptor for the cable, you can order one via our website under 'Spares & Accessories'.

Preserving the batteries

In order to maintain the optimum capacity of the rechargeable batteries, the trimmer should be fully discharged and then recharged for 3 hours every 6 months.

USB Adaptor

A USB charging adaptor is not supplied for this product. If you require one for charging, you can visit www.babyliss.com and enter product code 62628 under the 'Spares & Accessories' section of the website. If you require assistance in locating the adaptor, please contact the Conair Customer Care Line (refer to 'UK After Sales Service') for further information.

WARNING! Using a non-certified supply unit may cause hazards or serious injuries.

Installing the Precision Trimmer

- Before changing the heads, ensure the appliance is switched off.
- To remove a head, hold the handle of the appliance with one hand, hold the head with the other hand and push up from under the blades to lift the head up and away from the handle.
- To attach a head, line up the back of the attachment head with the holding section on the trimmer (Fig. 1).
- Then line up the two front prongs of the attachment head with the two metal clips on the handle (Fig. 2).
- These prongs on the head should rest on top of the metal clips from the handle (Fig. 3).
- Click the head down on to the trimmer.

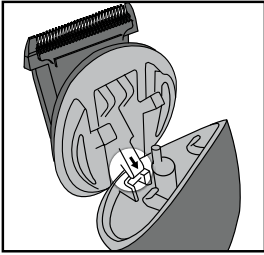


Fig. 1.

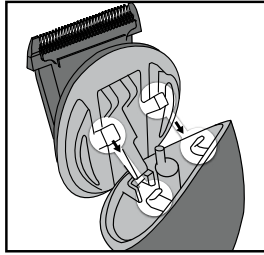


Fig. 2.

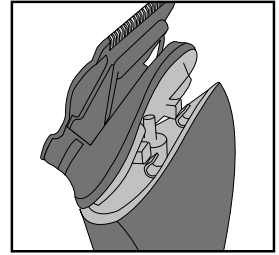


Fig. 3.

Installing the Nose & Ear Trimmer

- To attach the nose & ear head, insert the pin of the trimmer body into the hole of the nose & ear head (Fig. 4).
- Line up the rear prong of the attachment head with the slot on the back of the handle (Fig. 5).
- The head should lean at an angle with the two front prongs of the head resting on the metal clips of the handle (Fig. 6).
- Click the head down onto the handle.

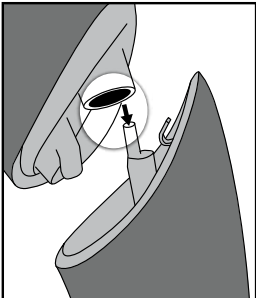


Fig. 4.

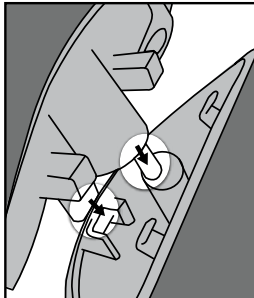


Fig. 5.

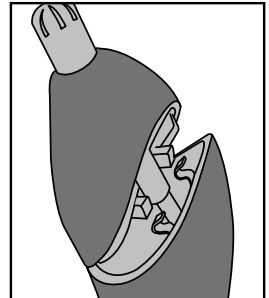


Fig. 6.

Comb Guides

This appliance is supplied with 9 comb guides for use with the Precision Trimmer.

Note: The Precision Trimmer can be used without any comb guides and will cut to a length of 0.5mm.

Attaching the comb guides to the Precision Trimmer

Slide the trimmer teeth and the top of the blades into the space under the comb guide. (Fig. 7)

Click the guide into position by gently pressing the back of the guide down to the back of the blade. (Fig. 8) The comb guide should click under the back of the metal blade.

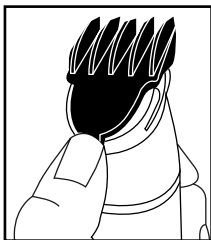


Fig. 7.

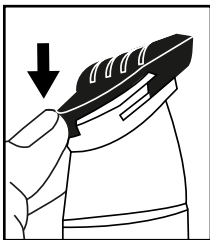


Fig. 8.

Using the Precision Trimmer without the comb guides

The Precision Trimmer blades can be used to edge and detail or to get a much closer cut (0.5mm).

- To remove the 5-position comb guide, simply slide the guide off the blade.
- To remove the jawline or body comb guides, push the tab up at the base of the comb guide which will release the guide from the blade (Fig. 9).

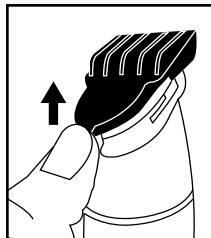


Fig. 9.

Outlining

- To tidy up the edges around your cut e.g. neckline and sideburns, detach the comb guides.
- Hold the appliance upside down, so the front of the trimmer is facing towards your head.
- Hold the trimmer blades straight on your sideburns or neckline and move the trimmer blade downwards. This will give you a clean, smooth finish.

Trimming

Using the Precision Trimmer with 5-Position Beard Comb Guide

- Attach the 5-position comb guide and select the required length (2-10mm).
- Switch the trimmer on.
- Hold the trimmer with the teeth pointing upwards, yet flat against the skin.
- Move the trimmer upwards and outward through the hair, against the direction of hair growth.
- The trimmer will work most efficiently when cutting through hair at its own speed.
- Never switch the appliance off whilst in the hair.

Using the Precision Trimmer with the Stubble Comb Guides

- Attach one of the five comb guides.
- If you require more than one cutting length, start with the longest length first.
- Switch the trimmer on.
- Hold the trimmer with the teeth pointing upwards, yet flat against the skin.
- Move the trimmer upwards and outward through the hair you wish to trim.
- To blend-in a shorter length use a shorter length comb guide and use in the same way as above.
- The trimmer will work most efficiently when cutting through hair at its own speed.
- Never switch the appliance off whilst in the hair.

Using the Precision Trimmer with the Jawline Comb Guides

- Attach one of the three comb guides.
- If you require more than one cutting length, start with the longest length first.
- Switch the trimmer on.
- Hold the trimmer with the teeth pointing upwards, yet flat against the skin.

- Move the trimmer upwards and outward through the hair you wish to trim.
- To blend-in a shorter length use a shorter length comb guide and use in the same way as above.
- The trimmer will work most efficiently when cutting through hair at its own speed.
- Never switch the appliance off whilst in the hair.

Using the Nose & Ear Trimmer

- For the safe and easy removal of unwanted nose and ear hair use the rotary trimmer head.
- Switch the trimmer on.
- Insert the trimmer into the nose or ear and gently move the trimmer in a circular motion.
- Only use the trimmer at the entrance to the ear or nose. Do not use any deeper, as this could cause injury.
- Never turn the trimmer off whilst in the nose and ear hair.

CLEANING & MAINTENANCE

To maintain optimum performance, the appliance should be cleaned after each use:

- Remove the comb guide after use. Rinse under running water and dry thoroughly before storage or use.
- Remove the trimmer head after use. The heads are washable for easy cleaning. Rinse under running water and dry thoroughly before storage or use.
- Do not disassemble the blades.
- Periodically, it may be necessary to oil the blades. After cleaning, attach a trimmer head, switch on and oil the blades using a few drops of lubricating oil.
- For instructions on how to re-attach the head, please refer to 'Changing the Heads' section.

BATTERY DISPOSAL



To minimise hazards to health and the environment at the end of this product's life, laws dealing with Waste Electrical and Electronic Equipment (WEEE) and The Waste Battery Directive require you to dispose of these products and their batteries at a suitable collection facility where they will be sent for appropriate recycling. Please contact your local authorities for more details on recycling and safe disposal of these in your area.

UK GUARANTEE

This BaByliss appliance is guaranteed for consumer use for 3 years and is only valid within the United Kingdom.

This guarantee covers consumer use only **i.e.** defects occurring under normal use within the home from date of purchase or date of delivery, whichever is later.

If the product develops a fault due to defects in materials or manufacture **within 12 months** from the date of purchase, to avoid delays and unnecessary inconvenience, where possible please return the product to the point of purchase for an exchange.

If the product develops a fault due to defects in materials or manufacture **after 12 months** from the date of purchase, and within the guarantee period, Conair UK After Sales Service will repair or replace the product.

Exclusions

This guarantee will no longer be valid meaning that The Conair Group Ltd will not be liable to repair or replace your product where:

- 1.) The appliance has been used on a voltage supply other than that which is marked on the product, or advised within this instruction booklet
- 2.) The appliance has been purchased from an unauthorised stockist*

- 3.) The appliance is used for professional / non domestic usage
- 4.) Repairs or alterations have been attempted by unauthorised persons
- 5.) The failure of the appliance is a direct result of misuse
- 6.) The failure is a result of not following the instructions for use

This guarantee does not cover any cosmetic damage due to misuse of the product nor any damage to persons or property that occurs because of product misuse.

**unauthorised stockists include, but are not limited to online auction sites, private sellers and those selling second hand goods, refurbished products etc*

Please contact the Conair Customer Care Line on 03705 133 191 (09:00 to 17:00 Monday to Friday) or e-mail ukinfo@conair.com for further information on authorised stockists.

It is important to retain your proof of purchase. We recommend attaching your receipt to this page.

Even where a refund may be applicable, no refund will be provided without a valid receipt or proof of purchase, we will only be able to offer a repair or replacement service. Please note this does not apply if the product was purchased directly from The Conair Group Ltd.

Guarantees on replacement products run from the original purchase date or date of delivery, whichever is later, and **not** from the date of replacement.

This guarantee is an additional benefit and does not affect your statutory rights as a consumer.

If you have any queries regarding this guarantee please contact the Conair Customer Care Line on 03705 133 191 (09:00 to 17:00 Monday to Friday) or e-mail ukinfo@conair.com

UK AFTER SALES SERVICE

For further advice on using the appliance, contact the Conair Customer Care Line on 03705 133191 (09:00 to 17:00 Monday to Friday) or email your enquiry to ukinfo@conair.com.

If you should need to return your appliance to us please send it to the following address:

Customer Care Centre
Conair Logistics
Unit 4
Revolution Park
Buckshaw Avenue
Buckshaw Village
Chorley
PR7 7DW

Please enclose your name and address, together with a copy of proof of purchase and details of the fault.

Please note this Instruction Booklet is not the guarantee.

