

# *BaByliss*<sup>®</sup> MEN

## 10 IN 1 TITANIUM MULTI TRIMMER 7255U

### **SAFETY CAUTIONS**

- Original instructions. Read these safety precautions carefully before using the unit! This appliance should only be used as described within this instruction booklet. Please retain for future reference.

### **IMPORTANT CHILD SAFETY**

- **ALWAYS** keep out of the reach of children (during and after use).
- This appliance should not be used, cleaned or maintained by children.
- Always take extra care if used on children or near children.
- Do not use on very young children.

### **IMPORTANT SAFETY**


**WARNING!** Do not use this appliance near bathtubs, showers, basins or other vessels containing water.



- Do not immerse the appliance in water or other liquids.
- **UK Only:** Do not use this appliance in the bathroom.
- **Outside the UK:** If using the appliance in a bathroom, unplug after use as the proximity of water can be dangerous even if the appliance is switched off. For additional

protection the installation of a residual current device (RCD) with a rated residual operating current not exceeding 30mA is advisable in the electrical circuit supplying the bathroom. Ask your installer for advice.

**CAUTION:** Keep the power cord and the appliance dry.

- Always inspect the appliance before use for noticeable signs of damage. Do not use if damaged or if the appliance has been dropped. In the event of damage contact the Conair Customer Care Line (refer to 'UK After Sales Service' section for further information).
- Do not use the appliance if the charging adaptor or lead is damaged. In the event of damage, discontinue use immediately. If the charging adaptor or lead is damaged, it must be replaced by the manufacturer. Return the appliance to the Customer Care Centre (refer to 'UK After Sales Service' section for further information). No repair must be attempted by the consumer.
- Only use the attachments supplied with this appliance.
- **WARNING!** For the purposes of recharging the battery, only use the detachable charging supply unit provided with this appliance (CA53). This symbol  indicates there is a detachable power supply for means of charging.
- Do not leave the appliance unattended when switched on.
- Do not place the appliance on any surface whilst in operation.
- Special care is required when using the appliance close to the ears, eyes and face.
- This appliance should not be used by adults whose reduced physical, sensory or mental capabilities, or whose lack of experience and knowledge, might cause a hazard, unless they have been correctly instructed to understand the safe

use and hazards involved and are adequately supervised.

- This product contains a Ni-MH rechargeable battery that is not to be removed from the appliance for charging. The batteries in this appliance are non-replaceable. Batteries must be disposed of safely at the end of life. Please take to a recycling centre for safe disposal.
- The supply terminals are not to be short circuited.
- For indoor, household, domestic use only.
- This product complies fully with all appropriate EU and UK Legislation and the standards relevant to this type and class of appliance. We are an ISO9001:2015 certified company that continually evaluates our Quality Management System performance. If you have any queries regarding product safety and compliance, please contact the Conair Customer Care Line (refer to 'UK After Sales Service' section).

## **INSTRUCTIONS FOR USE**

**IMPORTANT!** Only use the adaptor and attachments supplied with this appliance.

### **General**

- Always inspect the appliance before use to ensure the trimmer blades are free from hair, debris etc.
- Use on clean, dry hair that has been combed until tangle-free.

### **Oiling Instructions**

- For optimum cutting performance, it is highly recommended to oil the blades after every use.
- Switch the appliance on.
- Holding the trimmer at a 45 degree angle, gently squeeze the oil tube and apply 2 drops directly onto the blades.

- Leave the unit on for a further few seconds to allow the oil to thoroughly spread along the length of the blades.
- Switch off the unit and remove any excess oil by gently dabbing with a cloth before using on hair.

### **Charging Instructions**

- This trimmer is equipped with Ni-MH batteries.
- Before using for the first time, the appliance should be fully charged continuously for 16 hours. This initial super-charge ensures optimum power performance to ensure smooth fast cutting every time.
- Maximum battery capacity will only be reached after 3 charging and discharging cycles.
- Ensure the appliance is switched off.
- Plug the charging adapter into a suitable mains power socket and switch on at the wall. The charging indicator light will illuminate when the appliance is charging. When the battery is fully charged the LED light will turn off.
- A full 8 hours charge will supply enough power for 30 minutes of use.
- Subsequent charges should be for 8 hours.

### **Preserving the batteries**

In order to maintain the optimum capacity of the rechargeable batteries, the trimmer should be fully discharged and then recharged for 8 hours every 3 months.

### **Changing the Heads**

- Before changing the heads, ensure the appliance is switched off.
- To remove a head, hold the handle of the appliance with one hand, hold the head with the other hand and push up from under the blades to lift the head up and away from the handle.
- To attach a head, line up the back of the attachment head with the holding section on the trimmer (See Fig. 1).
- Then line up the two front prongs of the attachment head with the two metal clips on the handle (See Fig. 2).
- These prongs on the head should rest on top of the metal clips from the handle (See Fig. 3).
- Click the head down on to the trimmer.

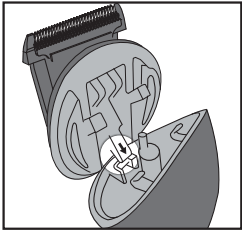


Fig. 1.

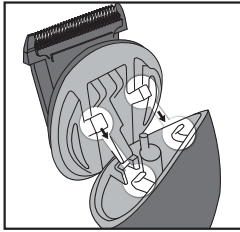


Fig. 2.

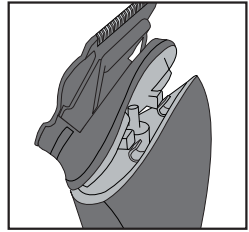


Fig. 3.

### Installing the nose/ear trimmer

- Insert the pin of the trimmer body into the hole of the trimmer head (See Fig. 4).
- Line up the rear prong of the attachment head with the slot on the back of the handle (See Fig. 5).
- The head should lean at an angle with the two front prongs of the head resting on the metal clips of the handle (See Fig. 6).
- Click the head down onto the handle.

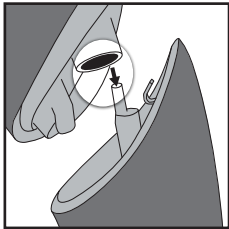


Fig. 4.

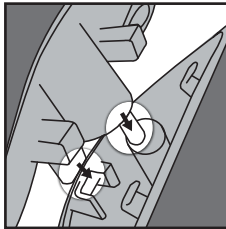


Fig. 5.

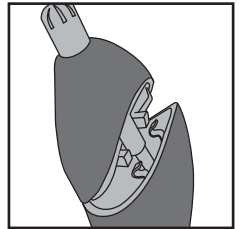


Fig. 6.

### COMB GUIDES

This appliance is supplied with 8 comb guides for use with the Precision Trimmer.

**Note:** The Precision Trimmer can be used without any comb guides and will cut to a length of 0.4mm.

## Attaching the comb guides to the trimmer

- Slide the trimmer teeth and the top of the blades into the space under the comb guide. (Fig. 7)
- Click the guide into position by gently pressing the back of the guide down onto the back of the blade. (Fig. 8)
- The comb guide should click under the back of the metal blade.

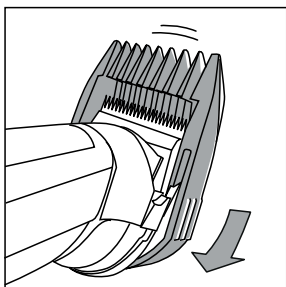


Fig. 7.

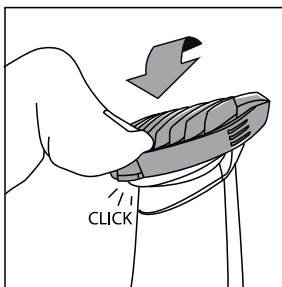
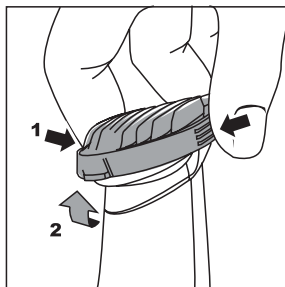


Fig. 8.

## Using the trimmer without the comb guide

The Precision Trimmer can be used to edge and detail or to get a much closer cut (0.4mm).

- To remove the comb guide, squeeze the sides of the comb guide, which will release the back from the blade.
- Lift the guide away.



## Trimming

### Using the Precision Trimmer with 6-Position Stubble Comb Guide

- Attach the 6-position comb guide and select the required length (1-3.5mm).
- Switch the trimmer on.
- Hold the trimmer with the teeth pointing upwards, yet flat against the skin.
- Move the trimmer upwards and outward through the hair, against the direction of hair growth.
- The trimmer will work most efficiently when cutting through hair at its own speed.
- Never switch the appliance off whilst in the hair.

## **Using the Precision Trimmer with the Beard Comb Guides**

- Attach one of the five comb guides (5mm, 6mm, 7mm, 8mm or 9mm).
- If you require more than one cutting length, start with the longest length first.
- Switch the trimmer on.
- Hold the trimmer with the teeth pointing upwards, yet flat against the skin.
- Move the trimmer upwards and outward through the hair you wish to trim.
- To blend-in a shorter length use a shorter length comb guide and use in the same way as above.
- The trimmer will work most efficiently when cutting through hair at its own speed.
- Never switch the appliance off whilst in the hair.

## **Using the Precision Trimmer with the Body Comb Guides**

- Attach one of the two comb guides (3mm or 4mm).
- If you require more than one cutting length, start with the longest length first.
- Switch the trimmer on.
- Hold the trimmer with the teeth pointing upwards, yet flat against the skin.
- Move the trimmer upwards and outward through the hair, against the direction of hair growth.
- Make sure to be particularly careful when trimming sensitive areas.
- The trimmer will work most efficiently when cutting through hair at its own speed.
- Never switch the appliance off whilst in the hair.

## **Outlining**

### **With the Precision Trimmer attachments**

- To tidy up the edges around your cut e.g. neckline and sideburns, detach the comb guides.
- Hold the appliance upside down, so the front of the trimmer is facing towards your head.
- Hold the trimmer blades straight on your sideburns or neckline and move the trimmer blades downwards. This will give you a clean, smooth finish.

## Using the Nose & Ear Trimmer

- For the safe and easy removal of unwanted nose and ear hair use the rotary trimmer head.
- Switch the trimmer on.
- Insert the trimmer into the nose or ear and gently move the trimmer in a circular motion.
- Only use the trimmer at the entrance to the ear or nose. Do not use any deeper, as this could cause injury.
- Never turn the trimmer off whilst in the nose and ear hair.

## CLEANING & MAINTENANCE

To maintain optimum performance, the appliance should be cleaned after each use:

- Remove the comb guide after use. Rinse under running water and dry thoroughly before storage or use.
- Remove the trimmer head after use. The heads are washable for easy cleaning. Rinse under running water and dry thoroughly before storage or use.
- Do not disassemble the blades.
- Periodically, it may be necessary to oil the blades. After cleaning, attach a trimmer head, switch on and oil blades using a few drops of the lubricating oil. Only use the lubricating oil specifically formulated for high speed trimmers that does not evaporate or slow the blades.
- For instructions on how to re-attach the head, please refer to 'Changing the Heads' section.



## BATTERY DISPOSAL

This appliance contains Ni-MH batteries. To protect the environment this appliance and its batteries must be disposed of safely. At the end of its life, please take this appliance to a recycling centre, where the internal rechargeable battery should be removed by a professional and recycled separately. For more information about the recycling of electrical and battery operated appliances please contact your local council office or your household waste disposal service. For specific enquiries regarding the replacement of batteries in this product please contact our Conair Customer Care Line (refer to 'UK After Sales Service' section).



## UK GUARANTEE

This BaBylissMEN appliance is guaranteed for consumer use for 3 years and is only valid within the United Kingdom.

This guarantee covers consumer use only **i.e.** defects occurring under normal use within the home from date of purchase or date of delivery, whichever is later.

If the product develops a fault due to defects in materials or manufacture **within 12 months** from the date of purchase, to avoid delays and unnecessary inconvenience, where possible please return the product to the point of purchase for an exchange.

If the product develops a fault due to defects in materials or manufacture **after 12 months** from the date of purchase, and within the guarantee period, Conair UK After Sales Service will repair or replace the product.

## Exclusions

This guarantee will no longer be valid meaning that The Conair Group Ltd will not be liable to repair or replace your product where:

- 1.) The appliance has been used on a voltage supply other than that which is marked on the product, or advised within this instruction booklet
- 2.) The appliance has been purchased from an unauthorised stockist\*
- 3.) The appliance is used for professional / non domestic usage
- 4.) Repairs or alterations have been attempted by unauthorised persons
- 5.) The failure of the appliance is a direct result of misuse
- 6.) The failure is a result of not following the instructions for use

This guarantee does not cover any cosmetic damage due to misuse of the product nor any damage to persons or property that occurs because of product misuse.

*\* unauthorised stockists include, but are not limited to online auction sites, private sellers and those selling second hand goods, refurbished products etc.*

*Please contact the Conair Customer Care Line on 03705 133 191 (09:00 to 17:00 Monday to Friday) or e-mail [ukinfo@conair.com](mailto:ukinfo@conair.com) for further information on authorised stockists.*

**It is important to retain your proof of purchase. We recommend attaching your receipt to this page.**

**Even where a refund may be applicable, no refund will be provided without a valid receipt or proof of purchase, we will only be able to offer a repair or replacement service. Please note this does not apply if the product was purchased directly from The Conair Group Ltd.**

Guarantees on replacement products run from the original purchase date or date of delivery, whichever is later, and **not** from the date of replacement.

**This guarantee is an additional benefit and does not affect your statutory rights as a consumer.**

If you have any queries regarding this guarantee please contact the Conair Customer Care Line on 03705 133 191 (09:00 to 17:00 Monday to Friday) or e-mail [ukinfo@conair.com](mailto:ukinfo@conair.com)

## **UK AFTER SALES SERVICE**

For further advice on using the appliance, contact the Conair Customer Care Line on 03705 133191 (09:00 to 17:00 Monday to Friday) or email your enquiry to [ukinfo@conair.com](mailto:ukinfo@conair.com).

If you should need to return your appliance to us please send it to the following address:

Customer Care Centre  
Conair Logistics  
Unit 4  
Revolution Park  
Buckshaw Avenue  
Buckshaw Village  
Chorley  
PR7 7DW

Please enclose your name and address, together with a copy of proof of purchase and details of the fault.

**Please note this Instruction Booklet is not the guarantee.**

