

BaByliss[®] MEN

CARBON STEEL
7468U


SAFETY CAUTIONS

- Original instructions. Read these safety precautions carefully before using the unit! This appliance should only be used as described within this instruction booklet. Please retain for future reference.


IMPORTANT CHILD SAFETY

- **ALWAYS** keep out of reach of children (during and after use and whilst cooling).
- Always take extra care if used on children or near children.
- Do not use on very young children.

IMPORTANT SAFETY

- **UK Only:** This appliance must not be used in the bathroom. 
- **Outside the UK:** If using the appliance in a bathroom, unplug after use as the proximity of water can be dangerous even if the appliance is switched off. For additional protection the installation of a residual current device (RCD) with a rated residual operating current not exceeding 30mA is advisable in the electrical circuit supplying the bathroom. Ask your installer for advice.
- The appliance's charging stand and/or adaptor must be

kept away from sources of water so that they do not fall into the water.

- **CAUTION!** Keep the power cord and the appliance dry. For appliances with a removable power supply unit, remove the power cord before cleaning or using the appliance under running water.
- Always inspect the appliance before use for noticeable signs of damage. Do not use if damaged or if the appliance has been dropped. In the event of damage contact the Conair Customer Care Line (refer to 'UK After Sales Service' section for further information).
- Do not use the appliance if the adaptor or lead is damaged. In the event of damage, discontinue use immediately. If the adaptor or lead is damaged, it must be replaced by the manufacturer. Return the appliance to the Customer Care Centre (refer to 'UK After Sales Service' section for further information). No repair must be attempted by the consumer.
- **WARNING!** For the purposes of recharging the battery, only use the detachable charging supply unit provided with this appliance (CA10). This  symbol indicates there is a detachable power supply for means of charging.
- Do not leave the appliance unattended when switched on.
- Do not leave the appliance plugged in for more than 24 hours.
- Unplug immediately if any problems occur during use.
- Only use the attachments supplied with this appliance.
- Do not place the appliance on any surface whilst in operation.

- Special care is required when using the appliance close to the ears, eyes and face.
- This appliance should not be used by adults whose reduced physical, sensory or mental capabilities, or whose lack of experience and knowledge, might cause a hazard, unless they have been correctly instructed to understand the safe use and hazards involved and are adequately supervised.
- Use with 1 × AA battery.
- Insert the battery as indicated on the inside of the battery compartment. Full details can be found in the ‘Replacing the batteries’ section.
- Non-rechargeable battery are not to be recharged.
- Rechargeable battery must be removed from the device before being re-charged.
- If the appliance is to be stored unused for a long period, the batteries should be removed.
- Before disposing of the device, remove all batteries and dispose of them in a container intended for this purpose. When the battery has run down, it should be disposed of at a recycling centre to safeguard the environment. If the battery leaks, avoid touching it and dispose of it at a recycling centre.
- The supply terminals are not to be short circuited.
- For indoor, household, domestic use only.
- This product complies fully with all appropriate EU and UK Legislation and the Standards relevant to this type and class of appliance. We are an ISO9001:2015 certified company that continually evaluates our Quality Management System performance. If you have any

queries regarding product safety and compliance, please contact the Conair Customer Care Line. (See 'UK After Sales Service' section for further information).

WEEE - END-OF-LIFE ELECTRICAL AND ELECTRONIC EQUIPMENTS

In everybody's interest and to actively participate in protecting the environment and human health:

- Do not discard your products with your unsorted household wastes.
- The WEEE (Waste electrical and electronic equipment) must be collected separately.
- Use the return and collection systems dedicated to the WEEE available in your area. In this way, some material can be recycled, re-used or recovered.
- By ensuring this product is disposed of properly, you will help prevent potential negative consequences for the environment and human health due to possible content of hazardous substances.

For more detailed information about the disposal of this product, please contact your local household waste disposal service.

INSTRUCTIONS FOR USE

IMPORTANT! Only use the charging unit and attachments supplied with this appliance.

General

- Always inspect the appliance before use to ensure the clipper blades are free from hair, debris etc.
- Use on clean, dry hair that has been combed until tangle-free.

Oiling Instructions

- For optimum cutting performance, it is highly recommended to oil the blades after every use.
- When using the oil for the first time, unscrew the cap and cut off the very end of the plastic tube with a pair of scissors.
- Switch the appliance on.
- Holding the clipper at a 45 degree angle, gently squeeze the oil tube and apply 2 drops directly onto the blades.
- Leave the unit on for a further few seconds to allow the oil to thoroughly spread along the length of the blades.
- Switch off the unit and remove any excess oil by gently dabbing with a cloth before using on hair.

Charging Instructions

- This clipper is equipped with Ni-MH batteries.
- Before using for the first time, the appliance should be fully charged continuously for 16 hours. This initial super-charge ensures optimum power performance to ensure smooth fast trimming every time. Maximum battery capacity will only be reached after 3 charging and discharging cycles. This initial super-charge ensures optimum power performance to ensure smooth fast cutting every time.
- Maximum battery capacity will only be reached after 3 charging and discharging cycles.
- Ensure the appliance is switched off.
- Plug the charging unit into a suitable mains socket.
- The charging indicator light will illuminate when the appliance is

plugged in and connected to the mains.

- A full 8 hours charge will supply enough power for 60 minutes of use.
- Subsequent charges should be 8 hours.

Preserving the batteries

In order to maintain the optimum capacity of the rechargeable batteries, the clipper should be fully discharged and then recharged for 16 hours every 6 months.

Mains Operation

- Ensure the appliance is switched off.
- Connect the adaptor to the base of the appliance and plug the adaptor into a suitable mains socket.
- The red LED will appear when the adaptor is correctly inserted into the appliance and connected to the mains.
- The appliance is now ready for use.
- **NOTE:** The appliance should not be used for longer than 20 minutes when operated from the mains.

Cordless Operation

- Insert the adaptor into the base of the appliance, plug into a suitable mains socket and switch on. The red LED will appear when the adaptor is correctly inserted into the appliance and connected to the mains.
- Once the appliance is fully charged, unplug the adaptor from the mains socket and appliance and prepare for use.

Comb Guides

The hair clipper comes with 2 comb guides and has 25 length settings from 1mm-25mm. The dark comb guide is for hair cutting and the transparent comb guide for beard trimming.

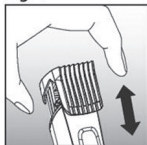
Note: The clipper can be used without any comb guides and will cut to a length of 0.5mm.

As a guide the chart below will help convert mm into standard hair cutting grades.

Cutting Length	Grade
3mm	#1
6mm	#2
9mm	#3
13mm	#4
16mm	#5
19mm	#6
22mm	#7
25mm	#8

- To change the length, simply turn the wheel to the right to the next 1mm increment.
- To attach or remove a comb guide, check that the appliance is switched off. Adjust the cutting length to the maximum length setting of 25mm beforehand using the adjustment wheel and push the guide in until it clicks into place or pull the guide upwards to remove it (Fig.1).

Fig. 1



Preparation for Use

Clipping

For an all over even cut:

- Select a length from 1-25mm.
- Switch the clipper on and the blades will start to move.
- Starting at the nape of the neck, hold the clipper with the teeth of the cutting blade pointing upwards, ensuring that the comb guide is resting flat against the head.

- Slowly move the clipper upwards and outwards through the hair towards your crown, against the direction of the hair growth. The comb guide will help to lift the hair while the blades cut the hair at the desired length.
- Once the desired length is achieved at the back of the hair, start clipping the top and sides.
- Hold the clipper to the front of your hair with the teeth pointing towards the back of your head and move the clipper towards your crown. Repeat if necessary, moving in rows from the front and the sides of your head to the back.
- You should achieve an even length cut all over your head.

For a shorter back and sides, with length on the top:

- Switch the clipper on and the blades will start to move.
- Hold the clipper to the front of your hair with the teeth pointing towards the back of your head and move the clipper towards your crown. Repeat as necessary, moving in rows from the front and the sides of your head to the back.
- Starting at the nape of the neck, with the comb guide flat against the head, move the clipper upwards and outwards over the area you want to take shorter.
- Repeat on the sides of the hair, starting with the teeth of the clipper pointing upwards and comb guide flat against the area above the ear, again moving the clipper upwards and outwards.

Outlining:

- To tidy up the edges around your cut e.g. neckline and sideburns, detach the comb guide.
- Hold the appliance upside down, so the front of the clipper is facing towards your head.
- Hold the clipper straight on your sideburns or neckline and move the clipper downwards. This will give you a clean, smooth finish.

Using the Beard Comb Guide

- Attach the transparent comb guide.
- If you require more than one cutting length, start with a longer length first.
- Switch the clipper on.

- Hold the clipper with the teeth pointing upwards, yet flat against the skin.
- Move the clipper upwards and outward through the hair you wish to trim.
- To blend-in a shorter length switch the clipper off and select a shorter length setting and use in the same way as above.
- The clipper will work most efficiently when cutting through hair at its own speed.

CLEANING & MAINTENANCE

To maintain optimum performance, the appliance should be cleaned after each use.

For easy cleaning, the blades on your BaBylissMEN clipper are removable. Regular cleaning will maintain their high performance level.

To clean proceed as follows:

- Remove the comb guide after use. Rinse under running water and dry thoroughly before storage or use.
- The clipper blade are removable for easy cleaning. To remove the blades, hold the clipper with the blades pointing upwards and push the underside of the blade teeth upwards to remove. Do not disassemble the blades.
- Using the cleaning brush, brush and blow away any remaining hair.
- To preserve your clipper's efficiency, we recommend cleaning the blades regularly. After cleaning, switch the appliance on and oil the blades using a few drops of the lubricating oil supplied. Only use the lubricating oil supplied with the appliance as this is specifically formulated for high speed clippers and does not evaporate or slow the blades.

NOTE: Do not attempt to repair or replace the blades. In the event that the blades become blunt or damaged, contact the Conair Customer Care Line (refer to UK 'After Sales Service' section for further information).



SAFE DISPOSAL

To minimise hazards to health and the environment at the end of this product's life, laws dealing with Waste Electrical and Electronic Equipment (WEEE) and The Waste Battery Directive require you to dispose of this product at a suitable collection facility where it will be sent for appropriate recycling. Please contact your local authorities for more details on recycling and safe disposal of these in your area.

INSTRUCTIONS FOR USE

Battery Operated Trimmer

Preparation for Use

- Always inspect the appliance before use for noticeable signs of damage. Do not use if damaged.
- Ensure the trimming heads are free from hair and debris (refer to 'Cleaning and Maintenance' section for further information).

Trimmer Head

- To remove the trimming head, turn the head anti-clockwise until the 'I' mark aligns with the '←' mark, then lift the head gently. (Fig. 1).

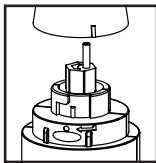


Fig. 1

- To reassemble the head onto the body, align the 'I' mark on the head with the '←' mark on the body and then turn clockwise until the 'I' mark aligns with the 'circle' mark on the body (Fig. 2).

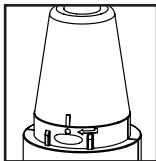


Fig. 2

Using the Trimmer

- Switch the trimmer ON.
- Move the trimmer upwards and outwards through the hair you wish to remove. The wide trimmer is ideal for tidying sideburns and small areas of facial hair.
- The wide trimmer head is ideal for shaping and styling the neckline and sideburns or making small touch ups to any facial hair to add the finishing touches, for a professional looking cut.

Note: Never submerge unit handle into water.

CLEANING & MAINTENANCE:

To maintain optimum performance, the appliance should be cleaned after each use.

- Ensure the appliance is switched 'OFF'.
- Gently blow any hairs from the trimmer head.
- Head can be removed and rinsed under the tap.
- Allow the trimmer to dry thoroughly before storing.

Changing the battery

The trimmer requires 1 x AA battery (1.5V). To insert or replace the battery, hold the trimmer upside down with the back facing you, placing both thumbs in the grooves on the top of the unit, firmly push up to remove the casing. Insert the battery as indicated on the inside of the battery compartment. Replace the casing by sliding it back into the main trimmer until it clicks into place. If the appliance remains unused for a while or if the battery has run down, remove it from the appliance.

UK GUARANTEE

This BaBylissMEN appliance is guaranteed for consumer use for 3 years and is only valid within the United Kingdom.

This guarantee covers consumer use only **i.e.** defects occurring under normal use within the home from date of purchase or date of delivery, whichever is later.

If the product develops a fault due to defects in materials or manufacture **within 12 months** from the date of purchase, to avoid delays and unnecessary inconvenience, where possible please return the product to the point of purchase for an exchange.

If the product develops a fault due to defects in materials or manufacture **after 12 months** from the date of purchase, and within the guarantee period, Conair UK After Sales Service will repair or replace the product.

Exclusions

This guarantee will no longer be valid meaning that The Conair Group Ltd will not be liable to repair or replace your product where:

- 1.) The appliance has been used on a voltage supply other than that which is marked on the product, or advised within this instruction booklet
- 2.) The appliance has been purchased from an unauthorised stockist*
- 3.) The appliance is used for professional / non domestic usage
- 4.) Repairs or alterations have been attempted by unauthorised persons
- 5.) The failure of the appliance is a direct result of misuse
- 6.) The failure is a result of not following the instructions for use

This guarantee does not cover any cosmetic damage due to misuse of the product nor any damage to persons or property that occurs because of product misuse.

**unauthorised stockists include, but are not limited to online auction sites, private sellers and those selling second hand goods, refurbished products etc.*

Please contact the Conair Customer Care Line on 03705 133 191 (09:00 to 17:00 Monday to Friday) or e-mail ukinfo@conair.com for further information on authorised stockists.

It is important to retain your proof of purchase. We recommend attaching your receipt to this page.

Even where a refund may be applicable, no refund will be provided without a valid receipt or proof of purchase, we will only be able to offer a repair or replacement service. Please note this does not apply if the product was purchased directly from The Conair Group Ltd.

Guarantees on replacement products run from the original purchase date or date of delivery, whichever is later, and **not** from the date of replacement.

This guarantee is an additional benefit and does not affect your statutory rights as a consumer.

If you have any queries regarding this guarantee please contact the Conair Customer Care Line on 03705 133 191 (09:00 to 17:00 Monday to Friday) or e-mail ukinfo@conair.com

UK AFTER SALES SERVICE

For further advice on using the appliance, contact the Conair Customer Care Line on 03705 133191 (09:00 to 17:00 Monday to Friday) or email your enquiry to ukinfo@conair.com.

If you should need to return your appliance to us please send it to the following address:

Customer Care Centre
Conair Logistics
Unit 4
Revolution Park
Buckshaw Avenue
Buckshaw Village
Chorley
PR7 7DW

Please enclose your name and address, together with a copy of proof of purchase and details of the fault.

Please note this Instruction Booklet is not the guarantee.

