

BaByliss[®]

WAVE SECRET AIR C1900U

UK Patent and Application Nos. GB2455716; EP2242393; WO2012/080751; GB1210274.5
Registered Community Design No: 002217927

IMPORTANT!

This styler reaches high temperatures and is not suitable for use on either synthetic or real hair extensions.

The hair should be clean, dry and free of dry shampoo, hairspray, mousse, spray wax, styling dust and all other styling products.

SAFETY CAUTIONS

- Original instructions. Read these safety precautions carefully before using the unit! This appliance should only be used as described within this instruction booklet. Please retain for future reference.

WARNING! BURN HAZARD: THIS APPLIANCE GETS HOT!

- **ALWAYS** keep out of reach of children (during and after use and whilst cooling).
- Always take extra care if used on children or near children.
- Do not use on very young children.

IMPORTANT SAFETY



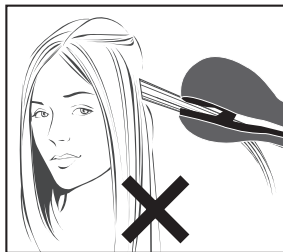
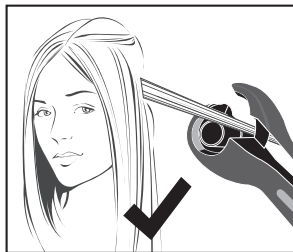
- **UK Only:** This appliance must not be used in the bathroom.
- **Outside the UK:** If using the appliance in a bathroom, unplug after use as the proximity of water can be dangerous even if the appliance is switched off. For additional protection the installation of a residual current device (RCD) with a rated residual operating current not exceeding 30mA is advisable in the electrical circuit supplying the bathroom. Ask your installer for advice.
- **WARNING!** Do not use this appliance near bathtubs, showers, basins or other vessels containing water.
- Do not immerse the appliance into water or other liquids.
- Always inspect the appliance before use for noticeable signs of damage. Do not use if damaged, or if the appliance has been dropped. In the event of damage, discontinue use immediately. Contact the Conair Customer Care Line (refer to 'UK After Sales Service' section for further information).
- Do not use the appliance if the lead is damaged. In the event of damage, discontinue use immediately. If the lead is damaged it must be replaced by the manufacturer. Return the appliance to the Customer Care Centre (refer to 'UK After Sales Service' section for further information). No repair must be attempted by the consumer.
- Do not leave the appliance unattended when switched on or plugged in.
- During use, do not place the appliance on any heat sensitive surface, even when using the heat mat provided.

- **WARNING!** Only hold the handle during use. Do not touch the hot surfaces of the appliance when in use as these can be extremely hot.
- Take care to avoid the hot surface of the appliance coming into direct contact with the skin, in particular the eyes, ears, face and neck.
- In the event of the appliance being left switched on, the appliance will automatically shut off after 60 minutes. If you wish to continue using the appliance after this time, simply press and hold the '⏻' button for 1-2 seconds to turn the power on. Press again to select the desired temperature. The temperature setting will flash until and then turn solid once the desired temperature has been reached.
- This appliance can be used by children aged from 8 years and above and persons with reduced physical, sensory or mental capabilities or lack of experience and knowledge if they have been given supervision or instruction concerning use of the appliance in a safe way and understand, the hazards involved. Children shall not play with the appliance. Cleaning and maintenance shall not be made by children without supervision.
- Allow the appliance to cool before storing away.
- After use, do not coil the lead around the appliance as this may cause damage. Instead, coil loosely by the side of the appliance.
- Do not use any accessories other than those recommended by BaByliss.
- Always unplug the appliance when not in use or before cleaning.
- This product complies fully with all appropriate EU

and UK Legislation and the Standards relevant to this type and class of appliance. We are an ISO9001:2015 certified company that continually evaluates our Quality Management System performance. If you have any queries regarding product safety and compliance, please contact the Conair Customer Care Line. (See 'UK After Sales Service' section for further information).

INSTRUCTIONS FOR USE

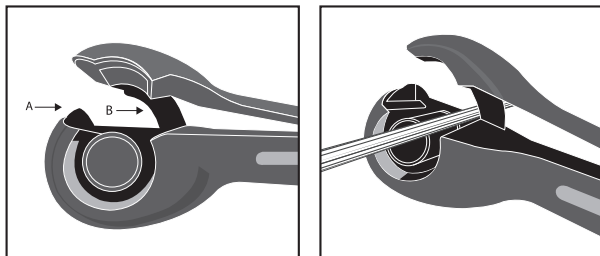
- Ensure the hair is clean, dry and free of dry shampoo, hairspray, mousse, spray wax, styling dust and all other styling products.
- Comb through to remove any tangles and divide the hair into sections of 3cm to 5cm depending on your hair type.
- Simply press and hold the '⏻' button for 1-2 seconds to turn the power on. Press again to select the desired temperature. The temperature setting will flash until and then turn solid once the desired temperature has been reached.
- Always insert the hair into the appliance with the open part of the curl chamber facing towards the head. For longer length hair, insert the hair into the appliance further down the section to ensure the hair is drawn into the curl chamber efficiently.



- **Caution.** If the appliance is used incorrectly, in certain instances a slight tangle can occur. Should a tangle occur, firstly turn the appliance off and desist from pulling the appliance away from the

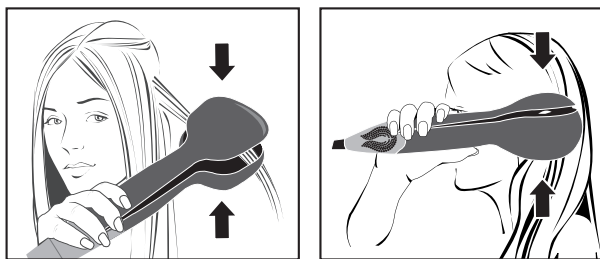
hair. Gently tease the hair out from the curl chamber until fully released.

- **IMPORTANT!** The neat section of hair must be inserted into the opening, beyond the hair stopper (A) until it reaches the black guide (B).

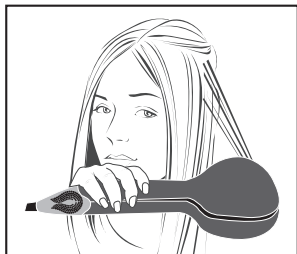


- **IMPORTANT!** Firmly close the handles together to allow the hair to be drawn into the curl chamber.
- Keep the appliance in position and once the hair has been drawn into the curl chamber, the appliance will start beeping. Continue to hold the handles closed until the appliance sounds 4 quick beeps in succession, this is to indicate the time is up.

IMPORTANT! If the styler is not released from the hair after the 4 quick beeps, it will beep continuously and the temperature digit will flash until the handles are opened and the wave released. To continue using the appliance, remove from the hair and use as normal.



- Open the handles and smoothly pull the appliance away from the hair. The opening of the handles will automatically activate the 'Cool Air Smart System', for a gentle burst of cooling air to help set the loose curl or waves.



- To allow the wave to set further, do not comb or brush the hair until it cools.
- Repeat around the head until you have the amount of waves desired.
- After use, press and hold the 'O' button for 1-2 seconds to switch off and unplug the appliance.

Heat Settings

A choice of 3 precise heat settings, 180°C, 200°C and 230°C, for different hair types with beep indication for wave release.

If you have delicate, fine, bleached or coloured hair, use the lower heat settings. For thicker hair, use the higher heat settings. It is suggested to always complete a test on initial use to ensure the correct temperature is used on the hair type. Start on the lowest setting and increase the temperature until desired result is achieved.

Auto Curl Technology

Curl direction control, left 'G', right 'C' or alternating 'E', for a choice of curl or wave finishes from glamorous to natural to effortlessly loose. Press the direction switch button to select the desired curl or wave direction.

Cool Air Smart System

'Cool Air Smart System' automatically delivers a gentle burst of cooling air to help set the wave as soon as it is released. For long-lasting loose curls or waves.

Sleep Mode

This appliance has an automatic sleep mode feature. If the appliance is not used for more than 20 minutes the temperature will automatically drop down to around 150°C. If you wish to continue using the appliance after this time, simply close then release the handles and it will return to the temperature setting you were using it on.

Auto Shut Off

This appliance has an automatic shut off feature for added safety. If the styler is switched on for more than 60 minutes continuously, it will automatically switch off. If you wish to continue using the appliance after this time, simply press and hold the '⏻' button for 1-2 seconds. Turn the power on again.

Heat Protection Mat

This appliance comes with a heat protection mat for use during and after styling. During use do not place this appliance on any heat sensitive surface, even when using the heat mat provided. After use, switch off and unplug the appliance. Immediately wrap the appliance in the heat mat provided and allow the appliance to fully cool down before storing away. Continue to keep out of the reach of children as it will remain hot for several minutes.

CARE & MAINTENANCE

To help keep your appliance in the best possible condition follow the steps below:

- Do not wrap the lead around the appliance, instead coil the lead loosely by the side of the appliance.
- Do not use the appliance at a stretch from the power point.
- Always unplug after use.

UK GUARANTEE

This BaByliss appliance is guaranteed for consumer use for 3 years and is only valid within the United Kingdom.

This guarantee covers consumer use only **i.e.** defects occurring under normal use within the home from date of purchase or date of delivery, whichever is later.

If the product develops a fault due to defects in materials or manufacture **within 12 months** from the date of purchase, to avoid delays and unnecessary inconvenience, where possible please return the product to the point of purchase for an exchange.

If the product develops a fault due to defects in materials or manufacture **after 12 months** from the date of purchase, and within the guarantee period, Conair UK After Sales Service will repair or replace the product.

Exclusions

This guarantee will no longer be valid meaning that The Conair Group Ltd will not be liable to repair or replace your product where:

- 1.) The appliance has been used on a voltage supply other than that which is marked on the product, or advised within this instruction booklet
- 2.) The appliance has been purchased from an unauthorised stockist*
- 3.) The appliance is used for professional / non domestic usage
- 4.) Repairs or alterations have been attempted by unauthorised persons
- 5.) The failure of the appliance is a direct result of misuse
- 6.) The failure is a result of not following the instructions for use

This guarantee does not cover any cosmetic damage due to misuse of the product nor any damage to persons or property that occurs because of product misuse.

*unauthorised stockists include, but are not limited to online auction sites, private sellers and those selling second hand goods, refurbished products etc.

Please contact the Conair Customer Care Line on 03705 133 191 (09:00 to 17:00 Monday to Friday) or e-mail ukinfo@conair.com for further information on authorised stockists.

It is important to retain your proof of purchase. We recommend attaching your receipt to this page.

Even where a refund may be applicable, no refund will be provided without a valid receipt or proof of purchase, we will only be able to offer a repair or replacement service. Please note this does not apply if the product was purchased directly from The Conair Group Ltd.

Guarantees on replacement products run from the original purchase date or date of delivery, whichever is later, and **not** from the date of replacement.

This guarantee is an additional benefit and does not affect your statutory rights as a consumer.

If you have any queries regarding this guarantee please contact the Conair Customer Care Line on 03705 133 191 (09:00 to 17:00 Monday to Friday) or e-mail ukinfo@conair.com

UK AFTER SALES SERVICE

For further advice on using the appliance or should you need to return your product, please contact the Conair Customer Care Line on 03705 133 191 (09:00 to 17:00 Monday to Friday) or e-mail your enquiry to ukinfo@conair.com

Return address:


Customer Care Centre
Conair Logistics
Unit 4, Revolution Park
Buckshaw Avenue
Buckshaw Village
Chorley
PR7 7DW

Please enclose your returns number, name and address details, together with a copy of proof of purchase and details of the fault.

Please note this Instruction Booklet is not the guarantee.

SAFE DISPOSAL



The  symbol on the product or on its packaging indicates that this product may not be treated as household waste. Instead it should be handed to an appropriate collection point for the recycling of Electrical and Electronic equipment. By ensuring this product is disposed of correctly, you will help prevent potential negative consequences for the environment and human health, which could otherwise be caused by inappropriate waste handling of this product. For more detailed information about the recycling of this product, please contact your local council office or your household waste disposal service.

